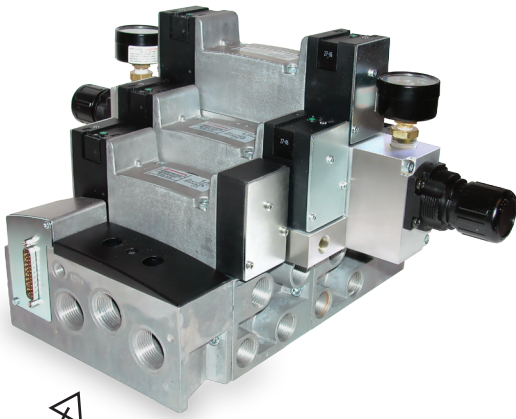


VALVES



Fieldbus
expandable



High flow
rate



High speed



Durable and
lightweight

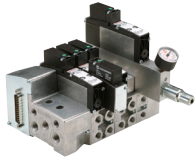
An unmatched, state-of-the-art lineup of pneumatic and fluid control valves for any application. IMI Precision Engineering offers high-flow, compact valves used in multi-industry solutions. From Valve Manifolds to Solenoid and Air Pilot Valves to Manual/Mechanical Valves to Safety Valves to Fluid Control Valves, we have a comprehensive range to meet demanding applications.

Fast Find Guide

IMI NORGREN VALVE MANIFOLDS

VS18

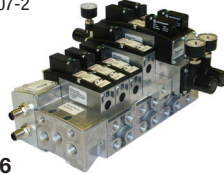
Plug-in Mini ISO Valves
2x2/2, 2x3/2, 5/2 and 5/3 valves
ISO 15407-2, Size 18 mm



VAL-02

VS26

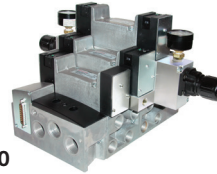
Valve Manifolds VS26 Series
Plug-in Mini ISO Valves
2x2/2, 2x3/2, 5/2 and 5/3 valves
ISO 15407-2



VAL-26

VS45

Valve Manifolds VS45 Series
2x3/2, 5/2 and 5/3 valves
Size 45 mm



VAL-50

V40/V41

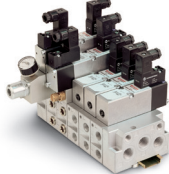
V40/V41 Mini ISO Star Valves
2x3/2, 5/2 and 5/3, Solenoid and
Pilot Actuated
ISO 15407-1 / VDMA 24 563 Size
18 mm



VAL-74

V44/V45

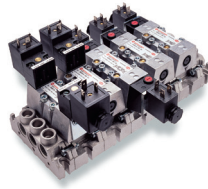
V44/V45 Mini ISO Star Valves
2x3/2, 5/2 and 5/3, Solenoid
and Pilot Actuated
ISO 15407-1 / VDMA 24 563
Size 26 mm



VAL-85

ISO Star

ISO Star Series Valves 5/2 and
5/3 ISO 5599/1
solenoid and air pilot actuated
valves



VAL-94

VM10

Valve manifolds, VM10 series
Valve slices 2 x 3/2, 5/2 and 5/3 with integral
push-in fittings
Ø 1/8" 1/4", 5/32", 3, 4, and 6 mm



VAL-102

VM15

Valve manifolds VM15 Series
Valve slices 2x3/2, 5/2 and 5/3 with
integral push-in fittings
Ø 1/4" 5/16", 3/8", 6, 8, and 10 mm



VAL-121

IMI NORGREN VALVES SOLENOID AND AIR PILOT VALVES

V50 to V53 Series

3/2, 5/2 and 5/3 Spool valves
Solenoid actuated and air pilot
operated 1/8" to 1/2"



VAL-136

V60-V62 Series

3/2, 5/2, 5/3, and 2 x 3/2
Directional control valves



VAL-152

Nugget 200 Spool Valves

1/4", 3/8", 1/2" NPT
Solenoid Pilot Actuated
3/2, 5/2, & 5/3 Inline Valves



VAL-164

Nugget 200 Spool Valves

1/4", 3/8", 1/2" Air Pilot Actuated
3/2, 5/2, & 5/3 Inline Valves



VAL-186

Nugget 500 Series Valves

1/2" and 3/4"
5/2 and 5/3 directional control
spool valves



VAL-192

Prospector Series Poppet Valves

1/4" to 2" Solenoid Pilot Actuated
2/2, 3/2, & 4/2 Inline Valves



VAL-198

Prospector Series Poppet Valves

1/4" to 2" Air Pilot Actuated
2/2, 3/2, & 4/2 Inline Valves



VAL-224

Fast Find Guide

IMI NORGREN MANUAL AND MECHANICAL VALVES

Nugget 200 Spool Valves

1/4", 3/8", or 1/2" Ports, Manual and Mechanical Actuated
3/2, 5/2, & 5/3 In-line Valves



VAL-234

Super X

Manual & Mechanical spool valves
In-line 3/2, 5/2 & 5/3, 1/8" & 1/4" NPT



VAL-250

VHLA Series Rotary Hand Valves

1/4", 3/8", and 1/2" NPT porting



VAL-260

IMI NORGREN ACCESSORY FUNCTION FITTINGS AND LOCKOUT VALVES

Accessory Function Fittings



VAL-262

In-line Lockout Valves

For installation in 1/4" through 1-1/2" air lines



VAL-264

IMI NORGREN PROPORTIONAL PRESSURE CONTROL

VP10

Electronic Pressure Regulator



VAL-266

VP50

Proportional Pressure Control Valve



VAL-268

VP51

Programmable proportional pressure control valve G $\frac{1}{4}$, $\frac{1}{4}$ NPT



VAL-270

VP60

5/3 Proportional flow control valve (nominal dia. 8 mm)
Directly operated spool valve with μ P-electronics



VAL-272

Fast Find Guide

IMI NORGREN PRESSURE REGULATORS MANOSTAT, AND ADDITIONAL VALVES

R-27 Series Manostat Precision Air Pressure Regulators



VAL-274

Additional valves



VAL-276

KIP VALVES AND MANIFOLDS

KIP Series 1, 2, 3, and 6 Solenoid Valves 2/2, 3/2, Orifice 1/32" to 1/4"



VAL-277

KIP Series 9 Low Watt 3/2, 3/2 .65 watt



VAL-305

KIP Isolation Valves 1/8" to 1/4" ports



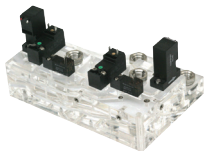
VAL-306

KIP Q2 Quick-Connect Valves Orifice 1/8" to 5/16"



VAL-309

KIP Manifolds Custom manifolds in a variety of materials and options



VAL-311

Fast Find Guide

IMI BUSCHJOST VALVES

Series 85710, 85750, 85730
Piston seat valves
2/2, 1/4" to 2" NPT, Orifice 0.3 to 2.0



VAL-328

Series 82630, 82570
Diaphragm valves
2/2, 1/4" to 1/2" NPT, Orifice 0.4



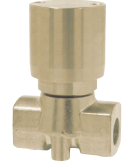
VAL-338

Series 82910, 83300
Diaphragm valves
2/2, 3/4" to 2-1/2" NPT, G1 to G1-1/2", Orifice 3/4" to 2-1/2"



VAL-342

Series 84380, 84390 Seat valves
2/2, 1/8" to 1/2" NPT, Orifice 0.08 to 0.39



VAL-346

Series 82410, 82680, 82740, 84490, 82640 Diaphragm valves
2/2, 1/4" to 2" NPT, Orifice 0.3 to 2.0



VAL-350

Series 82520, 84620 Seat valves
2/2, 1/8" to 3/8" NPT, Orifice 0.06 to 0.20



VAL-362

Series 84750, 84730, 84530, 84510 Angle seat valves
2/2, 1/2" to 3" NPT, Orifice 0.6 to 2.0



VAL-366

Series 83320, 82970 Diaphragm valves
2/2, G1 and G1-1/2, 3/4" to 2-1/2" NPT, Orifice 3/4 to 2-1/2"



VAL-376

Series 82390/82490, 82190/82290 Angle seat valves
2/2, 1/2" to 2" NPT, Orifice 0.6 to 2.0



VAL-380

Series 84080, 84670, 83640, 83670, 82750, 83920, 83930 Special purpose valves



VAL-384

IMI FAS VALVES

Chipsol valves
2/2 and 3/2, 8 mm



VAL-398

Picosol valves
2/2 and 3/2, 10 mm



VAL-400

Microsol valves
2/2 and 3/2, 15 mm



VAL-402

Intersol valves
2/2 and 3/2, 22 mm



VAL-406

Fast Find Guide

IMI FAS VALVES (cont)

Bacosol valves
2/2 and 3/2, 32 mm



VAL-408

Flatprop Proportional valves
2/2 16 mm



VAL-410

IMI HERION VALVES

Pilot Operated solenoid valve
3/2 Soft seal spool,
1/4", 3/8", 1/2" NPT



VAL-414

Air Operated valve
3/2 Soft seal spool
1/4", 3/8", 1/2" NPT



VAL-416

Air Operated valve
4 way (4/2, 5/2, 5/3)
1/8", 1/4", 3/8", 1/2" NPT



VAL-418

Solenoid operated valve
4 way (4/2, 5/2, 5/3) with soft seal
1/8", 1/4", 3/8", 1/2" NPT



VAL-420

Serie 97105 Inline and NAMUR interface spool valve
3/2, 5/2, 5/3 spool valves
G1/4", G1/2", 1/4", 1/2" NPT



VAL-424

Series 97100 Inline and NAMUR interface spool valve
G1/4", G1/2", 1/4", 1/2" NPT



VAL-440

Series 96000 and 97300 solenoid actuated NAMUR interface spool valve
G1/4"



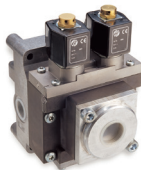
VAL-448

Series 95000, 95100 and 96000 2/2 and 3/2 directional control valves
G1/4 and 1/4" NPT
Orifice 2 to 6 mm



VAL-450

Herion XSz
Double valve
Cv 62.4
1/4" to 1-1/2"
145 psig
14°F to 140°F



VAL-463

XSz Accessories



VAL-468

3 way (3/2) Poppet valve for air and vacuum service
1 1/2" to 1-1/2" NPT



VAL-470

Fast Find **Guide**

IMI MAXSEAL VALVES

ICO3S

1/4" and 1/2"
2/2, 3/2, and 5/2



VAL-472

ICO4S

1/4" and 1/2"
2/2, 3/2, and 5/2



VAL-484

QEV Quick Exhaust

1/4" to 1"



VAL-513



Low Power ICO3 Valves

The Low Power ICO3S range of direct acting solenoid valves provide a low power option for high-flow instrument change over applications. With a nominal steady state power consumption of 1.0W, the Low Power ICO3S exhibits a 67% reduction in steady-state power consumption when compared to the standard ICO3S, while retaining identical flow and safety integrity level due to an uncompromised 11 lb (5 kg) spring-force and associated high force/friction ratio.

Unlike many other Low Power valves, the IMI Maxseal Low Power ICO3S does not achieve reduced energy consumption through a weakened return spring or internal piloting. Instead, the valve uses an integrated PWM driver to regulate the power delivered to the coil. The benefit of this approach is that internally the valve is in all ways identical to a standard ICO3S.

The Low Power ICO3S has been developed for applications where power supply is at a premium, such as remote shale gas installations. Often such installations are renewable, generator or battery powered, and as such, a power consumption of just 1.0W per valve makes the Low Power ICO3S the solenoid valve of choice, particularly where safety is paramount.

- > Full 316L Stainless Steel construction
- > IP66/X8 ingress protection
- > Saves 650kWh over 25 year life (compared with standard 4w valve)



← 67% reduction
in power
consumption

↗ Low power ICO3