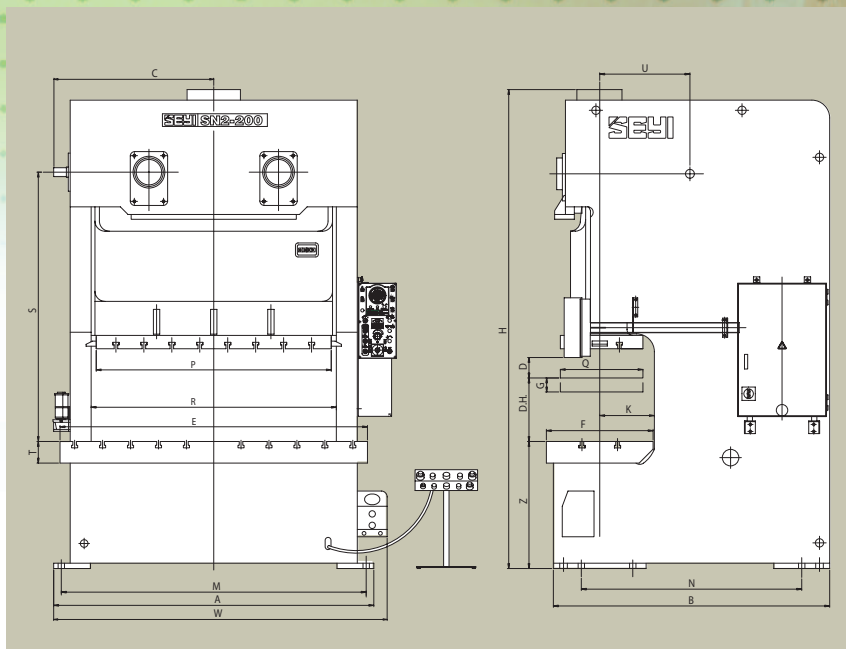


SPECIFICATION



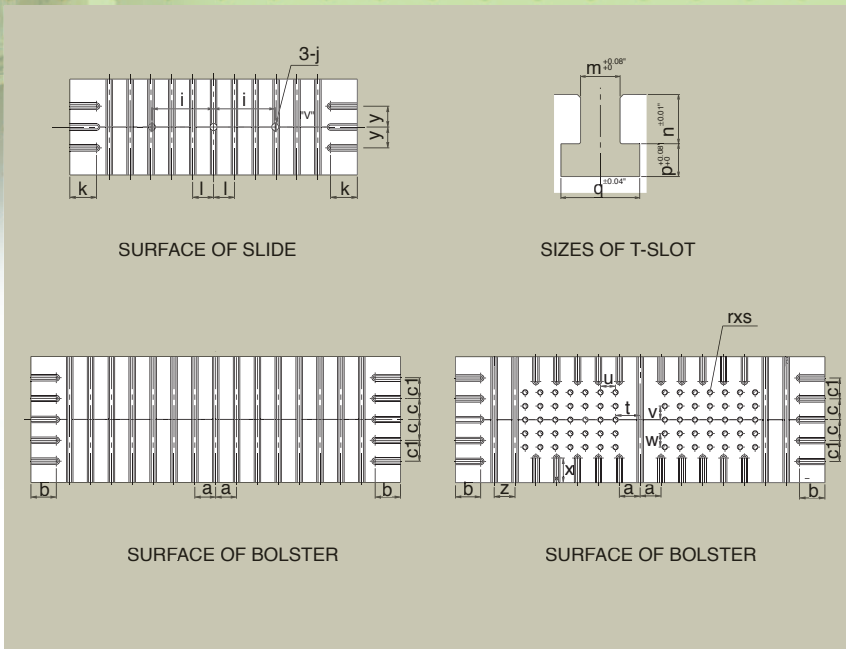
Specifications and dimensions

Model	SN2-121		SN2-176		SN2-220		SN2-275		SN2-330			
	S	H	S	H	S	H	S	H	S	H		
Capacity	US tons		121		176		220		275		330	
Length of Stroke	(D) in		7.09	4.33	7.87	5.12	9.06	5.91	9.84	7.09	11.02	7.08
Stroke per Minute	spm		35~65	45~90	35~50	35~70	25~45	30~60	22~40	30~50	20~35	30~50
Tonnage Rating Point	(A.B.D.C.) in		0.20		0.24		0.28		0.28		0.28	
Die Height	(DH) in		15.75	13.78	17.72	15.75	19.69	17.72	21.65	17.72	21.65	17.72
Slide Adjustment	(G) in		3.54		3.94		4.33		4.72		4.72	
Slide Area	(PxQ) in		56.30 x 20.47		61.42 x 22.83		72.83 x 25.59		82.68 x 27.56		82.68 x 31.49	
Bolster Area	(ExF) in		74.02 x 26.77		80.31 x 29.92		95.28 x 33.07		106.30 x 36.22		106.30 x 37.00	
Bolster Thickness	(T) in		5.91		6.30		6.69		7.09		7.87	
Bolster Height	(Z) in		35.43		37.40		39.37		43.31		43.31	
Inner Dimension of Frame	(R) in		57.87		62.60		75.98		86.22		85.43	
Throat Depth	(K) in		13.78		15.35		16.93		18.50		18.89	
Main Motor	HP x P		15HPx4P		20HPx4P		25 HPx4P		30HPx4P		40HPx4P	
Slide Adjustment Motor	HP x P		1HPx4P		2HPx4P		2HPx4P		2HPx4P		2HPx4P	
Foot Size	(AxB) in		77.17 x 69.29		85.43 x 79.92		99.21 x 85.24		110.63 x 97.24		111.81 x 99.80	
Anchor Bolts Position	(MxN) in		73.23 x 55.51		80.71 x 62.60		94.49 x 67.91		105.91 x 77.56		107.08 x 80.12	
Floor Space Required	(WxB) in		82.28 x 69.29		89.57 x 79.92		104.33 x 85.24		114.76 x 97.24		115.94 x 99.80	
Overall Height	(H) in		121.97	118.62	132.99	129.65	148.43		162.91		172.95	167.04

Die Cushion (Optional)

Capacity	US tons	6.6 x 2	8.8 x 2	11.1 x 2	15.4 x 2	15.4 x 2
Stroke Length	in	3.74	4.33	5.12	5.51	5.51
Area of Pads (each)	in	18.90 x 13.39	22.05 x 14.57	27.56 x 17.72	27.56 x 17.72	27.56 x 17.72

*Noise output is below 74 db under normal operation.



Dimensions of bolster and slide

Model		SN2-121	SN2-176	SN2-220	SN2-275	SN2-330
a	in	6.00	6.00	6.00	6.00	6.00
b	in	9.45	6.69	7.87	7.28	7.28
c	in	6.00	6.00	6.00	6.00	6.00
c1	in	X	6.00	6.00	6.00	6.00
i	in	13.78	15.75	17.72	17.72	17.72
j	in	ø2.01	ø2.01	ø2.01	ø2.01	ø2.01
k	in	6.69	9.25	8.86	7.68	7.68
l	in	6.00	6.00	6.00	6.00	6.00
m	in	1.10	1.10	1.10	1.10	1.10
n	in	1.18	1.18	1.18	1.18	1.18
p	in	0.79	0.79	0.79	0.79	0.79
q	in	1.89	1.89	1.89	1.89	1.89
r	in	5 x 4 x 2	6 x 4 x 2	7 x 5 x 2	7 x 5 x 2	7 x 5 x 2
s	in	ø1.26	ø1.26	ø1.26	ø1.26	ø1.26
t	in	6.30	5.91	6.03	7.09	7.09
u	in	3.94	3.94	4.33	4.33	4.33
v	in	1.97	1.97	3.94	3.94	3.94
w	in	3.94	3.94	3.94	3.94	3.94
y	in	6.00	6.00	6.00	6.00	6.00

※Materials and specifications are subject to change without notice.