

## SERIES B22

### GENERAL: Miniature - 7/8" Mounting

The new Series Heavy Duty Oil-Tight Control Units are a most complete series of buttons and lights, designed to save panel space in A.C. or D.C. control circuit applications.

Control units are available assembled or in individual units for customer assembly.

### ELECTRICAL RATINGS International Standards:

	600 Volt AC	<b>10 AMP</b>	A600
	300 Volt DC		Q300
Other Codes: CSA, CEI, IEC, VDE, BSI,			

### HEAVY DUTY OIL TIGHT

- Type 12/13
- Type 4 Hose Test / WaterTight (IP66)
- Type 4x

### OPERATIONAL TEMPERATURE RANGE:

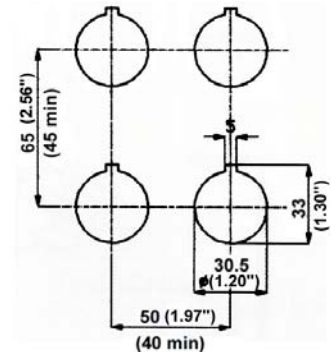
-25 degrees centigrade to +70 degrees centigrade

### ELECTRICAL RATINGS:

One Million Operating life  
(Double Contact Fidelity)

- ▲ Parallel Movable Controls
- ▲ Wiping Action
- ▲ Suitable for electronic dry circuit 12V, 5 mA

## SERIES B30 FULL SIZE 30mm



"ALL ROUND" (22mm) Satin Chrome & (22mm) Polyamide operators can be ordered as a "FULL SIZE B30" Operator simply by putting the prefix: **B30** - to the part number.

To order adaptors separate, see page 178.

- BCR-AX-** (Round Polyamide) (\$8.00 List)
- BCR-AM-** (Round Satin Chrome) (\$14.00 List)

### CONTACT BLOCKS

Self Cleaning With Wipe Action	Catalog Number
1 NO	SES 10
1 NC	SES 01
1 NO + NC	SEU 11
2 NO	SEU 20
2 NC	SEU 02

**NC CONTACTS  
ARE POSITIVE  
OPENING**



SES01  
1 Pole



SEU20  
2 Pole

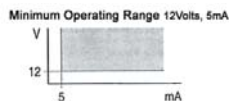


**PUSHBUTTONS 10 POLES MAX** All Contact Blocks are interchangeable.

### ELECTRICAL CHARACTERISTICS - CONTACT BLOCKS

UL (AC) A600	Thermal		10 AMP		DC RATING 250VDC	Thermal 120VDC	2.5 AMP 24VDC
	120V	240V	480V	600V			
MAKE	60	30	15	12	.27	.55	2.5
BREAK	6	3	1.5	1.2	.27	.55	2.5

Low Level Current Rating 12 Volt - 5mA.



**Heavy Duty** Lock Ring can be tightened with hand, flat screwdriver or tightening wrench.

Locator Pin can be snapped off for circle mounting, without notch.

