



Standard Modifications & Field Kits for ALL Contactors & Starters

Standard Modifications & Field Kits				Add to Part #	For Custom Assemblies Contact Factory	
Standard Modifications	Meets NEMA	Field Kit Part #	LIST	Factory Installed Suffix No.	LIST	Auxiliary Suffixes
Start - Stop Pushbuttons	1	KSS-2	\$ 25	-KSS-2	\$ 35	2N.O. / 2N.C. For Contactors and starters that require TOP MOUNT Auxiliaries Please indicate by placing a "T" after auxiliary designation. Example : LS11K.22T-A T= Top mount
Start - Stop Pushbuttons	3, 4, 12,4X	KSS-3	\$ 35	-KSS-3	\$ 90	
Hand - Off - Auto	1	KSL-1	\$ 35	-KSL-1	\$ 35	
Hand - Off - Auto	3, 4, 12,4X	KSL-3	\$ 35	-KSL-3	\$ 90	
Extra Pushbuttons	1, 4, 12,4X		\$ 35		\$ 70	
Red Pilot Light	1, 4, 12,4X	KRPL	\$ 55	-RPL-	\$ 60	
Foward Off Reverse	1, 4, 12,4X	KFOR	\$ 35	-FOR	\$ 90	
Control Circuit Transformer Size		Add Suffix to Part #				
For Contactors	VA Size	See Transformer Page 63				
LS4K-18K	50VA		- FT	\$ 135		
LS22K-55K	100VA		- FT	\$ 280		
LS75K-90K	150VA		- FT	\$ 340		
LS110K-160K	200VA		- FT	\$ 380		
LS220-280K	250VA		- FT	\$ NC		
Transformer Prices include primary & secondary fuses. To Add to control simply place the PRIMARY VOLTAGE or Incoming VOLTAGE AFTER the FT. Example: FT460 Example: Complete Part # : XLS5K-A1-L-FT460						

Discount Schedule for **ABOVE** modifications apply for AEG (ST) & EEC/ECX (EC)

Item Description to be Enclosed Amp Max (General Purpose) HP Max (At 460 Volt)	AEG/EEC Part Numbers	NEMA 1 METAL (UL) "WR" = WITH RESET		LIST	NEMA 4X UL DUST /WATER TIGHT (NON-METAL)	LIST
		■ = Hinged Enclosures	Part Number			
Contactors 55 Amp Max	SH05,SH5,LS05,LS07 LS4K,5K,7K,11K,15K,18K	■	M01-070405H	\$ 69	S4X-AM864	\$ 92
Mini starters	XLS05, XLS07, XLS4K-18K	■	M01-070405H WR(hinge)	\$ 72	S4X-AM864-WR	\$ 95
Starters 25 HP Max	XLS4K,5K,7K,11K,15K,18K		M01-100706-WR (no hinge)	\$ 72	S4X-AM1008-WR	\$ 125
Contactors 110 Amps Max	LS22K,30K,37K		M01-100706-(no hinge)	\$ 69	S4X-AM1008-	\$ 122
Contactors 140 Amps Max	LS45K,55K	■	M01-121006	\$ 87	S4X-AM1210	\$ 153
Reversing Contactors,55amp max	RLS4K,5K,7K,11K,15K,18K	■	M01-121006-WR	\$ 90	S4X-AM1210-WR	\$ 156
Starters 50 HP Max	XLS22K,30K,37K, RXLS4K,5K,7K,11K,15K,18K	■	M01-140806-WR	\$ 85	S4X-AM1412-WR	\$ 200
Reversing Starter (25HP Max)		■	M01-161208-WR	\$ 195	S4X-AM1614-WR	\$ 275
Starters 75 Amp Max	XLS45K,55K	■	M01-201608	\$ 238	S4X-AM2016	\$ 350
Reversing Starters 50 HP Max	RXLS22K,30K,37K	■	M01-201608-WR	\$ 241	S4X-AM2016-WR	\$ 353
Contactors 125 HP Max	LS75K,LS90K	■	M01-242008-WR	\$ 245	S4X-AM2420-WR	\$ 650
Reversing Starters 75 HP Max	RXLS45K, 55K	■	M01-242008	\$ 257	S4X-AM2420	\$ 647
Starters 125 Amps Max	XLS75K,90K	■	M01-302410	\$ 595	S4X-AM3024	\$ 790
Reversing Starters 125 HP Max	RXLS75K,90K	■	M01-362412-WR	\$ 725	S4X-AM3630-WR	\$ 1,560
Reversing Contactor 125 HP Max	RLS75K,RLS90K	■	M01-362412	\$ 722	S4X-AM3630	\$ 1,557
Contactors 250 HP Max	LS110K,132K,160K	■	M01-423612-WR	\$ 1,300	S4X-AM483612-WR	\$ 1,700
Reversing Contactors 250 HP Max	RLS110K,132K,160K	■				
Starters 250 HP Max	XLS110K,132K,160K	■				
Reversing Starters 250 HP Max	RXLS110K,132K,160K	■				
Reversing Contactors	RLS220K,RLS280K,LS220K	■				
Starter 400 HP Max	XLS220K,280K	■				
Reversing Starters 400 HP Max	RXLS220K,280K	■				

Enclosure Part # Provides dimensions, **Example:** M01-070405, 7" Height, 4" Width, 5"Depth.
 ■ = Hinged Enclosures (Others are LIFT OFF Cover). (4X) All Hinged Enclosures.

Discount Schedule for Enclosures Only (RP)



Standard Modifications & Field Kits for ALL Contactors & Starters

Standard Modifications & Field Kits				Add to Part #	For Custom Assemblies Contact Factory	
Standard Modifications	Meets NEMA	Field Kit Part #	LIST	Factory Installed Suffix No.	LIST	Auxiliary Suffixes
Start - Stop Pushbuttons	1	KSS-2	\$ 25	-KSS-2	\$ 35	2N.O. / 2N.C. For Contactors and starters that require TOP MOUNT Auxiliaries Please indicate by placing a "T" after auxiliary designation. Example : LS11K.22T-A T= Top mount
Start - Stop Pushbuttons	3, 4, 12,4X	KSS-3	\$ 35	-KSS-3	\$ 90	
Hand - Off - Auto	1	KSL-1	\$ 35	-KSL-1	\$ 35	
Hand - Off - Auto	3, 4, 12,4X	KSL-3	\$ 35	-KSL-3	\$ 90	
Extra Pushbuttons	1, 4, 12,4X		\$ 35		\$ 70	
Red Pilot Light	1, 4, 12,4X	KRPL	\$ 55	-RPL-	\$ 60	
Foward Off Reverse	1, 4, 12,4X	KFOR	\$ 35	-FOR	\$ 90	
Control Circuit Transformer Size		Add Suffix to Part #				
For Contactors	VA Size	See Transformer Page 63				
LS4K-18K	50VA		- FT	\$ 135		
LS22K-55K	100VA		- FT	\$ 280		
LS75K-90K	150VA		- FT	\$ 340		
LS110K-160K	200VA		- FT	\$ 380		
LS220-280K	250VA		- FT	\$ NC		
Transformer Prices include primary & secondary fuses. To Add to control simply place the PRIMARY VOLTAGE or Incoming VOLTAGE AFTER the FT. Example: FT460 Example: Complete Part # : XLS5K-A1-L-FT460						

Discount Schedule for **ABOVE** modifications apply for AEG (ST) & EEC/ECX (EC)

Item Description to be Enclosed Amp Max (General Purpose) HP Max (At 460 Volt)	AEG/EEC Part Numbers	NEMA 1 METAL (UL) "WR" = WITH RESET ■ = Hinged Enclosures Part Number	LIST	NEMA 4X UL DUST /WATER TIGHT (NON-METAL)	LIST
Contactors 55 Amp Max	SH05,SH5,LS05,LS07 LS4K,5K,7K,11K,15K,18K	M01-070405H ■	\$ 69	S4X-AM864	\$ 92
Mini starters	XLS05, XLS07, XLS4K-18K	M01-070405H WR(hinge) ■	\$ 72	S4X-AM864-WR	\$ 95
Starters 25 HP Max	XLS4K,5K,7K,11K,15K,18K	M01-100706-WR (no hinge)	\$ 72	S4X-AM1008-WR	\$ 125
Contactors 110 Amps Max	LS22K,30K,37K	M01-100706-(no hinge)	\$ 69	S4X-AM1008-	\$ 122
Contactors 140 Amps Max	LS45K,55K	M01-121006 ■	\$ 87	S4X-AM1210	\$ 153
Reversing Contactors,55amp max	RLS4K,5K,7K,11K,15K,18K	M01-121006-WR ■	\$ 90	S4X-AM1210-WR	\$ 156
Starters 50 HP Max	XLS22K,30K,37K, RXLS4K,5K,7K,11K,15K,18K	M01-140806-WR ■	\$ 85	S4X-AM1412-WR	\$ 200
Reversing Starter (25HP Max)		M01-161208-WR ■	\$ 195	S4X-AM1614-WR	\$ 275
Starters 75 Amp Max	XLS45K,55K	M01-201608 ■	\$ 238	S4X-AM2016	\$ 350
Reversing Starters 50 HP Max	RXLS22K,30K,37K	M01-201608-WR ■	\$ 241	S4X-AM2016-WR	\$ 353
Contactors 125 HP Max	LS75K,LS90K	M01-242008-WR ■	\$ 245	S4X-AM2420-WR	\$ 650
Reversing Starters 75 HP Max	RXLS45K, 55K	M01-242008 ■	\$ 257	S4X-AM2420	\$ 647
Starters 125 Amps Max	XLS75K,90K	M01-302410 ■	\$ 595	S4X-AM3024	\$ 790
Reversing Starters 125 HP Max	RXLS75K,90K				
Reversing Contactor 125 HP Max	RLS75K,RLS90K	M01-362412-WR ■	\$ 725	S4X-AM3630-WR	\$ 1,560
Contactors 250 HP Max	LS110K,132K,160K	M01-362412 ■	\$ 722	S4X-AM3630	\$ 1,557
Reversing Contactors 250 HP Max	RLS110K,132K,160K			S4X-AM483612-WR	\$ 1,700
Starters 250 HP Max	XLS110K,132K,160K	M01-423612-WR ■	\$ 1,300		
Reversing Starters 250 HP Max	RXLS110K,132K,160K				
Reversing Contactors	RLS220K,RLS280K,LS220K				
Starter 400 HP Max	XLS220K,280K				
Reversing Starters 400 HP Max	RXLS220K,280K				

Enclosure Part # Provides dimensions, **Example:** M01-070405, 7" Height, 4" Width, 5"Depth.

Discount Schedule for Enclosures Only (RP)

■ = Hinged Enclosures (Others are LIFT OFF Cover). (4X) All Hinged Enclosures.

Enclosures for MBS32 SG



IP55 Dust Tight / Water Tight	Description	Cat. no.	List
Plastic enclosures For MBS32 SG ONLY	Surface mounting IP55 - Dust Tight/Water Tight	MI55	\$30
	Flush mounting IP55 - Dust Tight/Water Tight	MIT55	22

(**) If adding undervoltage release to these enclosures, please add adaptor set "**MIAS**" to enclosure.

Mounting accessories for MBS32SG enclosures only



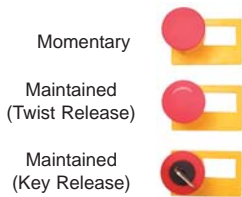
Description	Cat. no.	List
Neutral connection To be used inside the enclosure	MIN	\$5



(**) Adaptor set Required boot kit for adding undervoltage release to enclosures MI55 and MIT55 .	For enclosures used with MBS32*SG and undervoltage release with 2NO auxiliary contacts	MIAS	\$5
---	--	-------------	------------



Padlocking device For three padlocks with max. 8mm shackle diameter Not to be used with emergency stop handle	MID	\$15
--	------------	-------------



Emergency mushroom push-button IP55	Description	Cat. no.	List
	Mushroom momentary operation	MIPM	\$20
	Mushroom maintained, unlatch by turning	MIPL	30
	Mushroom maintained, unlatch with a key	MIPK	85

Indicator lamps For Cover IP55	Color	Voltage	Cat. no.	List
	Green	110/120V	MILGJ	\$15
	Green	220/240V	MILGN	15
	Green	380/440V	MILGU	15
	Green	480/500V	MILGX	15
	Green	600V	MILGY	15
	Red	110/120V	MILRJ	15
	Red	220/240V	MILRN	15
	Red	380/440V	MILRU	15
	Red	480/500V	MILRX	15
	Red 600V		MILRY	15
	Transparent	110/120V	MILCJ	15
	Transparent	220/240V	MILCN	15
	Transparent	380/440V	MILCU	15
	Transparent	480/500V	MILCX	15
	Transparent	600V	MILCY	15

ENCLOSURES & ACCESSORIES



MBS 25-105 Lock Off Kit

MBS 25 Accessories

Pilot Light for above enclosures. Specify color ** and voltage *

Catalog No.	List Price
MBS25-PL- * - **	\$16

* Voltage Suffix	**Color Suffix
-A 120V	-G green
-C 220V	-R red
-D 380V	-Example:
-E 480V	MBS25-PL-A-R

Enclosure Type S4 IP55 Dust/Watertight

Enclosure, NEMA 7 Hazardous Area Flush Plate with Gasket IP55 Dust/Watertight Replacement Start/Stop Boot Neutral Link for mounting above enclosures
Padlock Accessories for enclosures for up to 3 padlocks use **PG Adaptor** to 1/2" NPT

Red Mushroom Operator for above enclosure IP55

Latch Type MR
Key Release MR
Momentary MR

Auxiliary Contacts Side Mount

1 N.O., 1 N.C.
2 N.O.
1 N.O., 1 N.C. Early Activating
2 N.O. Early Activating

Auxiliary Contacts Inside Mount 1 N.O., 1 N.C.
TRIP Alarm Aux. Switch Inside mount
1 N.O.
1 N.C.

SHUNT TRIP KIT * specify voltage

* -A 120V 60 Hz 110V 50 Hz
-C 240V 60 Hz 220V 50 Hz
-D 380V 50 Hz
-E 480V 60 Hz
-G 24V 60 Hz

UNDERVOLTAGE TRIP * specify voltage

see above

Combination Rail Mounting Brackets
Includes 2 DIN Rails to mount MBS25 and LS contactors

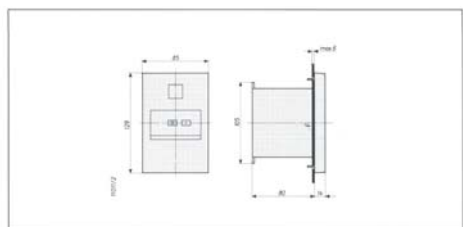
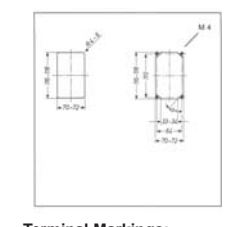
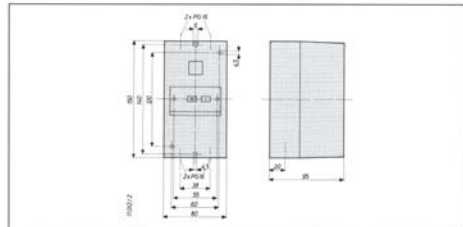
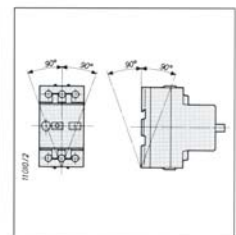
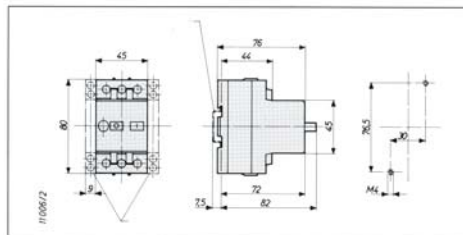
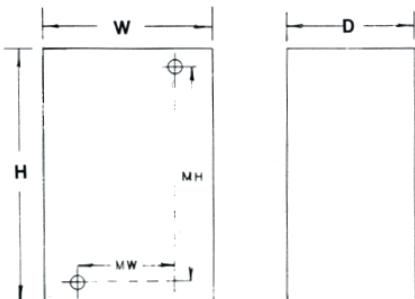
Current Limiter Rapid Module

For increasing fault current breaking capacity of MBS 25 up to 50 KA/3 380V max.

Catalog No.	List Price
MBS25-S4	\$30
MBS25-M7	\$665
MBS25-S4F	\$16
MBS25-S4-116	\$8
MBS25-114	\$7
MBS25-105	\$13
PG16-1/2	\$5.50
MBS25-106	\$30
MBS25-107	\$61
MBS25-108	\$19
HS9.11	\$20
HS9.20	\$15
HS9V.11	\$25
HS9V.20	\$15
HS10.11	\$20
HS10R10	\$20
HS10R01	\$20
MBS25-101-*	\$48
MBS25-100-*	\$48
MBS25-206	\$15
MBS 25-140	\$50

	OPEN MBS-25	ENCLOSED-S4 MBS-25
Overall Dimensions		
H Height	3.14	5.9
W Width	1.77	3.14
D Depth	2.99	3.79
MH Mounting Height	3.01	4.72
MW Mounting Width	1.18	2.36

Dimensions less handles or buttons.



Terminal Markings:

- C1,C2 - a trip
- D1,D2 - r trip
- 13/14 - 1. aux. switch, 1N.O.
- 21/22 - 1. aux. switch, 1N.C.
- 31/32 - 2. aux. switch, 1N.C.
- 43/44 - 2. aux. switch, 1N.O.
- 13/14 - 1. aux. switch, 1N.O.
- 23/24 - 1. aux. switch, 1N.O.
- 33/34 - 2. aux. switch, 1N.O.
- 43/44 - 2. aux. switch, 1N.O.